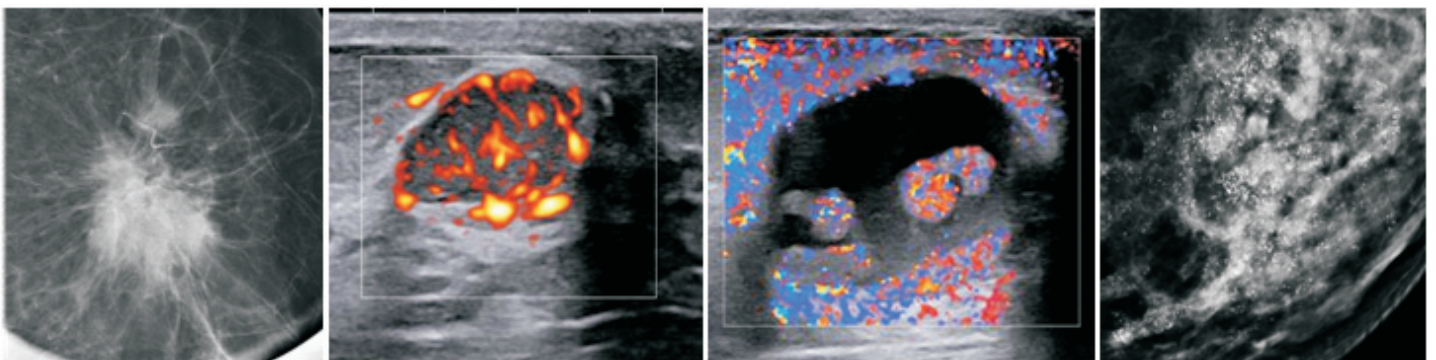


BIIP 2016

4th Breast Imaging & Interventions Program 2016



ORGANISING TEAM

DR. SELVI RADHAKRISHNA

DR. NAGA AMULYA M

BIIP 2016 SECRETARIAT

Mrs. Uma Maheswari & Ms. Nalini

New No. 47, Old No 16, South Beach Avenue

Near MRC Nagar Kalyana Mandapam,

MRC Nagar, Chennai - 600 028

Phone: 09445913665/044 24610831 (contact between 9 to 5 pm)

Email: cbbreastimagingcourse@gmail.com

Website: www.chennaibreastcentre.com

Website: www.breastcancer-centre.com

4 th Breast Imaging & Interventions Program 2016

Multimodality Approach to Detection and Diagnosis of Breast Diseases

This course provides clear and extensive knowledge about diagnostic breast imaging with clinical applications and best practice standards.

Course highlights

1. Detailed study of Mammography, Breast ultrasound and Breast MRI.
2. Clinically oriented imaging lectures.
3. Image guided interventions workshop.
4. Digital Mammography workshop.
5. MRI workshop.
6. University CME credits.

Dates : **August 19th, 20th and 21st, 2016.**

Venue : **IIT Auditorium, Chennai.**

Course Fee : **Rs. 5000/- (Course material (CD) and lunch included).**

Who should attend?

Radiologists with sub specialty interest in breast imaging.

Surgeons with subspecialty interest in breast surgery.

Pathologists with subspecialty interest in breast pathology.

PROGRAM SCHEDULE

August 19 (Day 1) - 9 am onwards

Session 1: Anatomy: The basis of breast imaging

Session 2: Step by step reading of a mammogram

Session 3: Ultrasound knobology and standard criteria and terminology of ultrasound findings.

Session 4: Analysis of mass lesions

Session 5: Standard MRI protocol, Step by step MRI reading, Diagnostic criteria and Bi-Rads terminology.

Session 6: Stereotactic Biopsy

Session 7: Guided interventions.

Workshop

August 20 (Day 2) - 8 am onwards

Session 1: All about Calcifications

Session 2: Benign lesions in the breast

Session 3: Evaluation and Management of nipple discharge

Session 4: Breast cancer: Rad-Path correlation and clinical management

Session 5: Axillary nodal assessment and sentinel lymph node biopsy

Session 6: MR features of malignant lesions

Session 7: Asymmetry and Architectural distortion on mammogram

Session 8: Best practice standards in reporting.

Workshop

August 21 (Day 3) – 8 am to 1.00 pm

Workshop

Interaction Time

Discussion of mammogram workshop cases. Multimodality approach.

REGISTRATION DETAILS

- Program - Aug 19th, 20th & 21st, 2016.
- Venue – IIT AUDITORIUM, CHENNAI
- Registration is limited to 60 participants
- Registration includes lunch and tea breaks and dinner on workshop day.
- Registration fees do not include accommodation.
- A list of nearby hotels, contact details and tariff are enclosed. Registrants are requested to make a direct booking with the concerned hotels. A special rate has been negotiated for the course participants. Please mention the course and register with the hotel directly.
- Registration fee – Rs. 5000/- (Spot registration is not allowed.)
- Cheque or DD in favour of “BIIP course” payable at Chennai.
- Cancellation policy

A service charge of Rs.250/- will be deducted for all cancellations received in writing before 05th August. No Refunds will be granted for cancellation after 05th August 2016.

- The participants will be divided into three groups (A, B & C Batch) for intervention workshops which will be held on 19th, 20th and 21th (Friday, Saturday and Sunday).

Registration Form: BIIP 2016

Name : _____

Qualification : _____

Designation : _____

Institute : _____

Address for Communication : _____

E-mail : _____

Landline : _____

Mobile : _____

DD/On Par Cheque No _____ Dated : _____

Amount : _____



Accommodation details:

Hotel Raj Palace, Adyar

#12, Durgabai Deshmukh Road, Opp Sathya Studios, Anna Sathya Nagar, Greenways Rd, Raja Annamalai Puram, Chennai, Tamil Nadu 600028. Tel : 044 2493 8888

Standard /Single	2500 + Tax
Standard/ Double	2800 + Tax
Deluxe /Single	2800 + Tax
Deluxe/ Double	3200 + Tax

(Please ask for Nova Specialty Hospital/Apollo Spectra corporate rates)

Hotel Leela Palace, MRC Nagar

The Leela Palace, Adyar Seaface, M.R.C Nagar, Chennai. Tamil Nadu 600 028. Tel : +91 (44) 6665 1234

Deluxe Single	9000 + Taxes
Deluxe Single (With Bfast)	9500 +Taxes
Deluxe Double	10000 +Taxes
Deluxe Double (With Bfast)	10500 +Taxes

(Please ask for Nova Specialty Hospital/Apollo Spectra corporate rates)

Hotel Lemon Tree, Guindy

72, Sardar Patel Rd, Venkata Puram, Guindy, Chennai, Tamil Nadu 600032 Tel : 044 4423 2323

Standard Single	4800+Taxes
Executive	5300 +Taxes

(Please ask for Apollo Spectra corporate rates)

Hotel Ginger, Guindy

No 1, FA, 11 th Floor IITM research park kanagam road, behind Tidal Park, Taramani. Tel : 044 6666 3333

Single occupancy	3400/- INC tax
Double occupancy	4016/- INC tax

(Please ask for Apollo Spectra corporate rates)

Hotel Somerset, MRC

No 94, Sathyadev Avenue, MRC Nagar, Chennai. Tamil Nadu- 600 028. Tel : +91 44 7100 0001

Phone Reservations : +91 44 7101 0000

Standard Single Occupancy	4500 + Taxes
Suite room Single Occupancy	6000 + Taxes

(Please ask for Nova Specialty Hospital/Apollo Spectra corporate rates)

Travels:

NTL : Chennai: 044 – 3000 3000 / 6666 6666

Fast track : Head office Telephone: 24732020 / 28889999 / 60006000 (Adyar - 044 2452 4422)

OLA : CHENNAI : 044 3355 3355

Please note : We do not take any financial sponsorship for this course from the Industry. The course is entirely funded by the registration fees and Chennai breast centre with a non profit motive. We strive to provide the best possible learning atmosphere. Please give us your feedback about our shortcomings and we will strive to get better.